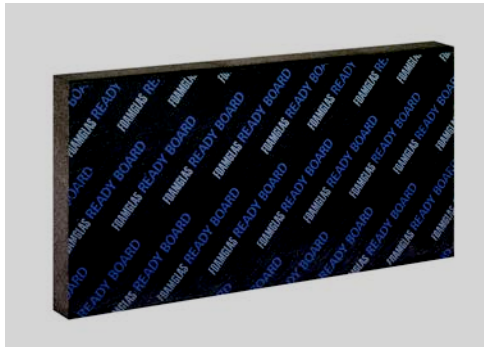




# FOAMGLAS® READY BOARD T4+

Page: 1      Date: 15.04.2013      Supersedes: 01.02.11      www.foamglas.com



FOAMGLAS® READY BOARD T4+ consists of FOAMGLAS® slabs bonded together. The upper side is covered with a bitumen coating. It allows for direct torch-on of waterproofing sheets.  
The lower side is lined with a white glass fibre facing.

**Form of delivery (content per package)**

length x width [mm]	1200 x 600							
thickness [mm]	40	50	60	70	80	90	100	110
units	6	5	4	4	3	3	3	2
square metre [m <sup>2</sup> ]	4.32	3.60	2.88	2.88	2.16	2.16	2.16	1.44

length x width [mm]	1200 x 600							
thickness [mm]	120	130	140	150	160	170	180	
units	2	2	2	2	2	14*	14*	
square metre [m <sup>2</sup> ]	1.44	1.44	1.44	1.44	1.44	10.08	10.08	

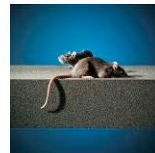
Other dimensions and thicknesses are available on request.  
\* No single package, but each 14 boards on a pallet.

**General FOAMGLAS® Cellular Glass Insulation characteristics**

- Description : FOAMGLAS® Insulation is manufactured from specially graded recycled glass (≥ 60%) and natural raw materials which are available in abundant supply (sand, dolomite, lime...). The insulation is totally inorganic, contains no ozone depleting propellants, flame resistant additives or binders. Without VOC or other volatile substances.
- Reaction to fire (EN 13501-1) : Core material complying with Euroclass A1, non-combustible, no toxic fumes
- Service temperature limits : from -265°C to +430°C
- Water vapour resistance (EN ISO 10456) : μ = ∞
- Hygroscopicity : zero
- Capillarity : zero
- Melting point (cf DIN 4102-17) : >1000 °C
- Thermal expansion coefficient (EN 13471) : 9 x 10<sup>-6</sup> K<sup>-1</sup>
- Specific heat (EN ISO 10456) : 1000 J/(kg·K)
- FOAMGLAS® characteristics :



Waterproof



Resistant to attack



High compressive strength



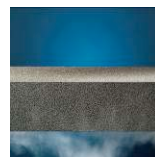
Acid resistant / chemical resistant



Easy cut to shape



Non-combustible



Impervious to water vapour



Dimensionally stable



Ecological



Radon protection



# FOAMGLAS® READY BOARD T4+

Page: 2

Date: 15.04.2013

Supersedes: 01.02.11

www.foamglas.com

## 1. Product characteristics according to EN 13167 <sup>1)</sup>

Density (± 10%) (EN 1602)	: 115 kg/m <sup>3</sup>
Thickness (EN 823) ± 2 mm	: from 40 to 180 mm
Length (EN 822) ± 5 mm	: 1200 mm
Width (EN 822) ± 2 mm	: 600 mm
Thermal conductivity (EN ISO 10456)	: $\lambda_D \leq 0.041$ W/(m·K)
Reaction to fire (EN 13501-1)	: Euroclass E (Core material Euroclass A1)
Point load (EN 12430)	: PL $\leq$ 1.5 mm
Compressive strength (EN 826 annexe A)	: CS $\geq$ 600 kPa
Bending strength (EN 12089)	: BS $\geq$ 450 kPa
Tensile strength (EN 1607)	: TR $\geq$ 150 kPa

<sup>1)</sup> CE-marking ensures conformity with the mandatory essential requirements of CPD as mentioned in EN 13167; within the CEN Keymark certification all mentioned characteristics are certified by an empowered, notified and accredited 3<sup>rd</sup> party.

## 2. Additional product data

Thermal diffusivity at 0°C	: $4.2 \times 10^{-7}$ m <sup>2</sup> /sec
$\lambda_D$ -value and mean t° range (EN ISO 13787)	: + 35 °C $\leq$ 0.045 W/(m·K)
Product Conformity BS EN 13167 : 2001	: Nr. CL 07020029
BRE Green Guide Rating	: A
Green Spec® Listed	: yes

## 3. Applications

Insulation system allowing for direct torch-on of waterproofing sheets:

- flat roofs (cold bonding on steel deck using PC® 11 adhesive)
- belowgrade walls