



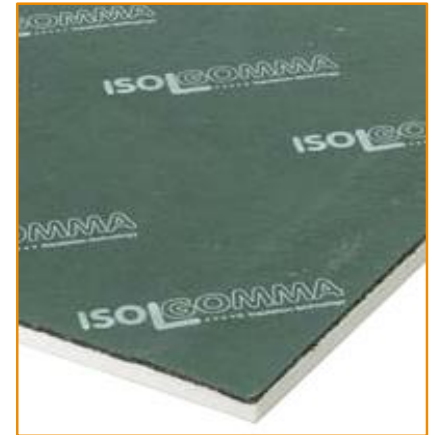
TECHNICAL DATA

Rewall 28 R

Acoustic and thermal insulation for floating floors, for lining of existing walls

Technical specification

Airborne noise insulation in 28 mm-thick pre-assembled panels, made of a 8 mm-thick SBR (Stirene Butadiene Rubber) rubber granules hot pressed with polyurethane binder, density of 800 kg/m³ and a 20 mm-thick polyester fiber panel, density of 100 kg/m³. The panels dimensions are 1.20 m width x 1.00 m length.



- Thermal and sound insulating
- Long term durability and stability
- Wide versatility

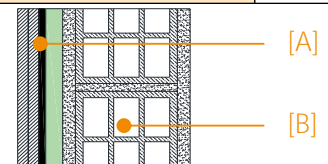
PHYSICAL CHARACTERISTICS	Standard	Unit	Rewall 28 R	Tolerance
Thickness		mm	28	± 10%
Length		m	1,00	± 5%
Width		m	1,20	± 1%
Superficial weight		kg/m ²	8,4	± 10%
Colour			green/black	

ACOUSTIC CHARACTERISTICS	Standard	Unit	Rewall 28 R	Tolerance
Dynamic stiffness s'	EN 29052/1	MN/m ³	9	± 1
Impact sound pressure level attenuation ΔLw - laboratory test	EN ISO 10140	dB	29	

Wall composition 20.5 cm thick - certified

A: coating made with: Rewall 28R + 2x12.5 mm plasterboard

B: 120 mm hollow block wall (12/25/50) + 1.5 cm plaster on both sides



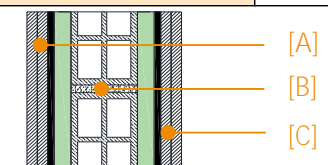
Transmission Loss Rw⁽¹⁾	EN ISO 10140	dB	57	
---	--------------	----	----	--

Wall composition 18.5 cm thick - certified

A: coating made with: Rewall 28R + 2x12.5 mm plasterboard

B: 80 cm hollow block wall (8/25/50)

C: coating made with: Rewall 28R + 2x12.5 mm plasterboard



Transmission Loss Rw⁽¹⁾	EN ISO 10140	dB	60	
---	--------------	----	----	--

TECHNICAL CHARACTERISTICS	Standard	Unit	Rewall 28 R	Tolerance
Thermal resistance R	EN 12667	m ² K/W	0,7	
Fire grade	EN 13501-1		F	

PACKING AND STORING

Each pallet is wrapped and protected with waterproof polythene film. Inside storage is recommended to avoid possible wet storing.

⁽¹⁾ Values obtained in Isolgomma acoustic laboratory.

The suggestions and technical information given above represent our knowledge regarding the properties and the product's uses. ISOLGOMMA reserve the right to modify or update this data without prior notice. This document is the property of ISOLGOMMA and all rights are therefore reserved.



TECHNICAL DATA

Rewall 28 R

Acoustic and thermal insulation for floating floors, for lining of existing walls

INSTALLATION INSTRUCTIONS

FLOOR INSULATION



Install the edging strip to the walls and install the panels on the floor with the rubber side to the top



Seal the junctions between the panels with the Stik tape



Build the screed

WALL LINING



Lay the under wall strip



Apply the glue on the panel by spreading it on dots (suggested glue Knauf Perifix)



Glue the plasterboard plate to the Rewall 28R with a light pressure



Drill the plate, the Rewall 28R and the underlying masonry as per the laying manual and fix mechanically



Fix the second gypsum board by gluing dots or screwing it on centre line and on the side borders with double thread screw. Offset the first board with the second



Apply the plastic mesh tape in the gypsum boards jointing lines. Grouting