



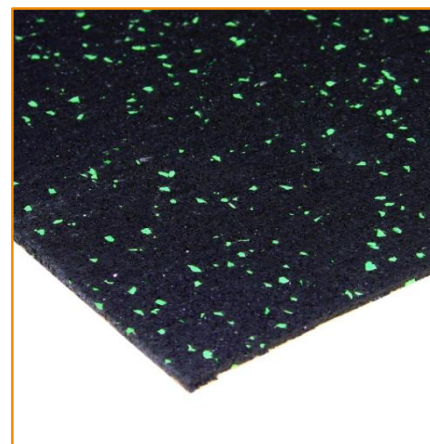
TECHNICAL DATA

Sylcer

Sound insulation under ceramic or stone floor tiles

Technical specification

3 mm acoustic insulation rolls, made of SBR (Stirene Butadiene Rubber) granules rubber and EPDM (Ethylene Propylene Diene Monomer) granules rubber compacted using a polyurethane binder in a hot process. The colour of the product is black and it is supplied in rolls 20 m lenght, 1.00 m width. Density is 820 kg/m³.



- **Minimal thickness**
- **Easy to install**
- **Direct application over existing floorings**

PHYSICAL CHARACTERISTICS	Standard	Unit	Sylcer 3	Tolerance
Thickness		mm	3	± 0.3
Length		m	20	± 1.5 %
Width		m	1	± 1.5 %
Density		kg/m ³	820	± 5%
Superficial weight		kg/m ²	2,46	± 5%
Colour			black/green	

ACOUSTIC CHARACTERISTICS	Standard	Unit	Sylcer 3	Tolerance
Dynamic stiffness s'	EN 29052/1	MN/m ³	460	± 20
Dynamic stiffness ⁽¹⁾ (dry application)	EN 29052/1	MN/m ³	180	± 20
Impact sound pressure level attenuation ΔLw - laboratory test	EN ISO 10140	dB	17	

TECHNICAL CHARACTERISTICS	Standard	Unit	Sylcer 3	Tolerance
Compression load (deformation 10%)	EN 826	kPa	376	± 5%
Thickness under load dL (250 Pa)	EN 12431	mm	3,3	
Thickness under load dF (2 kPa)	EN 12431	mm	3,2	
Thickness under load dB (50 kPa → 2 kPa)	EN 12431	mm	3,1	
Level for compressibility	EN 13162	mm	CP2	
Hardness	DIN 53505	Shore A	55	± 5
Thermal conductivity coefficient λ	EN 12667	W/m ² K	0,12	
Water vapour diffusion resistance factor μ	EN 12086		14	
Water vapour trasmission Sd	EN 12086		0,042	
Fire grade	DIN 4102		B2	

PACKING AND STORING

Each pallet is wrapped and protected with waterproof polythene film. Inside storage is recommended to avoid possible wet storing.

⁽¹⁾ Measurement executed in deviation from norm EN 29052-1, without applying plaster on the test sample

⁽²⁾ Test report: concrete slab 14 cm, screed in sand and cement 5 cm, SylCer glue on screed, ceramic tiles 1 cm glue on SylCer

The suggestions and technical information given above represent our knowledge regarding the properties and the product's uses. ISOLGOMMA reserve the right to modify or update this data without prior notice. This document is the property of ISOLGOMMA and all rights are therefore reserved.

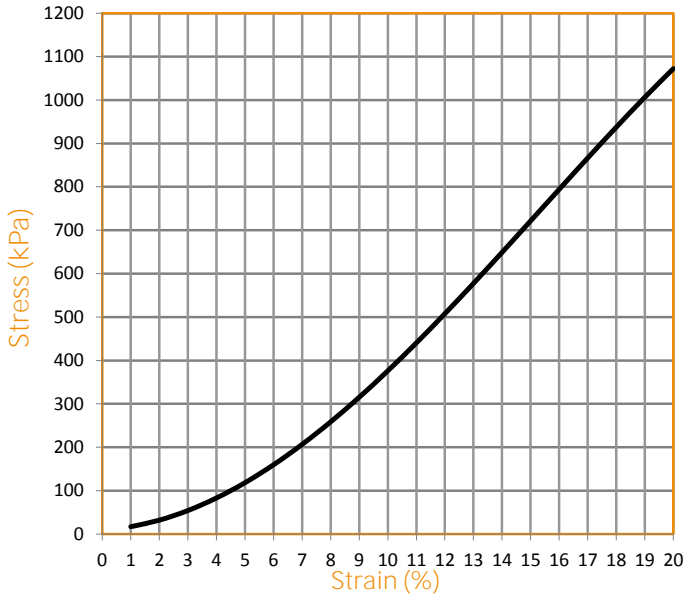


TECHNICAL DATA

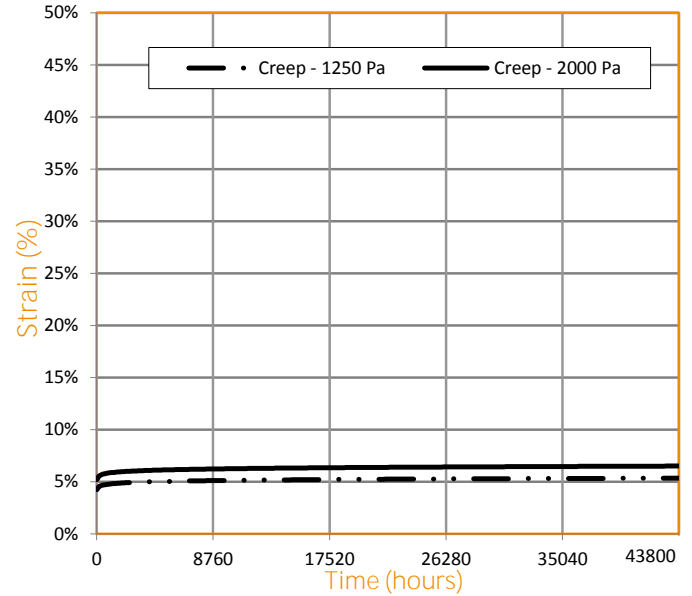
Sylcer

Sound insulation under ceramic or stone floor tiles

Compression behavior EN 826



Creep behavior EN 1606 ⁽³⁾



⁽³⁾ The initial thickness of the product during testing is equal to the value of pag. 1 "Thickness under load dL (250 Pa)"

INSTALLATION INSTRUCTIONS



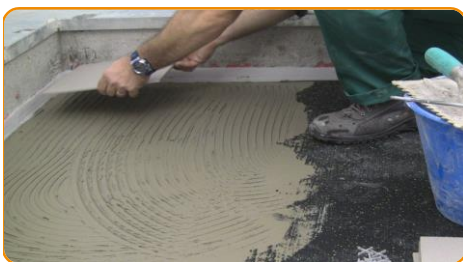
Fix the Profile Flat 5 around the bottom of the surrounding walls



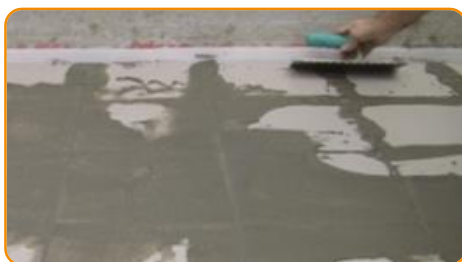
Spread a thin layer of adhesive onto the floor, then glue the Sylcer



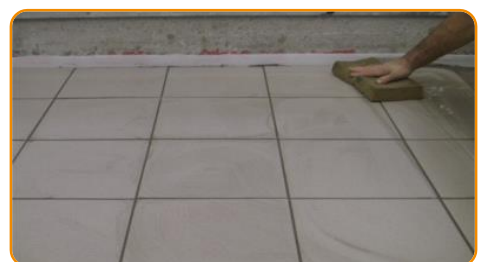
Tape all the Sylcer jointing borders with the Stik tape



Spread the bi-component concrete glue, layer the ceramic tiles over the adhesive glue



Apply the grouting glue



When the grouting starts to solidify the ceramic clean can be done