



FOAMGLAS® T4+

Page: 1

Date: 15.04.2013

Supersedes: 01.02.11

www.foamglas.com



FOAMGLAS® T4+

Form of delivery (content per package)

length x width [mm]	600 x 450							
thickness [mm]	40	50	60	70	80	90	100	110
units	12	10	8	7	6	6	5	5
square metre [m ²]	3.24	2.70	2.16	1.89	1.62	1.62	1.35	1.35

length x width [mm]	600 x 450							
thickness [mm]	120	130	140	150	160	170	180	
units	4	4	4	3	3	3	3	
square metre [m ²]	1.08	1.08	1.08	0.81	0.81	0.81	0.81	

Other dimensions and thicknesses are available on request.

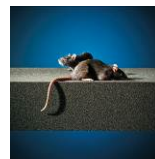
General FOAMGLAS® Cellular Glass Insulation characteristics

Description	: FOAMGLAS® Insulation is manufactured from specially graded recycled glass (≥ 60%) and natural raw materials which are available in abundant supply (sand, dolomite, lime...). The insulation is totally inorganic, contains no ozone depleting propellants, flame resistant additives or binders. Without VOC or other volatile substances.
Reaction to fire (EN 13501-1)	: Material complying with Euroclass A1, non-combustible, no toxic fumes
Service temperature limits	: from -265°C to +430°C
Water vapour resistance (EN ISO 10456)	: $\mu = \infty$
Hygroscopicity	: zero
Capillarity	: zero
Melting point (cf DIN 4102-17)	: >1000 °C
Thermal expansion coefficient (EN 13471)	: $9 \times 10^{-6} \text{ K}^{-1}$
Specific heat (EN ISO 10456)	: 1000 J/(kg·K)

FOAMGLAS® characteristics



Waterproof



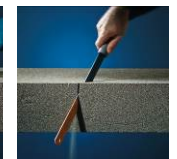
Resistant to attack



High compressive strength



Acid resistant / chemical resistant



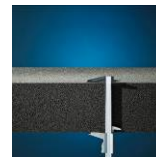
Easy cut to shape



Non-combustible



Impervious to water vapour



Dimensionally stable



Ecological



Radon protection



FOAMGLAS® T4+

Page: 2

Date: 15.04.2013

Supersedes: 01.02.11

www.foamglas.com

1. Product characteristics according to EN 13167 ¹⁾

Density (± 10%) (EN 1602)	: 115 kg/m ³
Thickness (EN 823) ± 2 mm	: from 40 up to 180 mm
Length (EN 822) ± 5 mm	: 600 mm
Width (EN 822) ± 2 mm	: 450 mm
Thermal conductivity (EN ISO 10456)	: $\lambda_D \leq 0.041$ W/(m·K)
Reaction to fire (EN 13501-1)	: Euroclass A1
Point load (EN 12430)	: PL ≤ 1.5 mm
Compressive strength (EN 826 annexe A)	: CS ≥ 600 kPa
Bending strength (EN 12089)	: BS ≥ 450 kPa
Tensile strength (EN 1607)	: TR ≥ 150 kPa

¹⁾ CE-marking ensures conformity with the mandatory essential requirements of CPD as mentioned in EN 13167; within the CEN Keymark certification all mentioned characteristics are certified by an empowered, notified and accredited 3rd party.

2. Additional product data

Thermal diffusivity at 0°C	: 4.2×10^{-7} m ² /sec
λ_D -value and mean t° range (EN ISO 13787)	: + 35 °C ≤ 0.045 W/(m·K)
Product Conformity BS EN 13167 : 2001	: Nr. CL 07020029
BRE Green Guide Rating	: A
Natureplus certificate	: 0406-1101-101-1
Green Spec® Listed	: yes

3. Applications

Insulation of:

- flat roofs
- façades
- belowgrade floors and walls
- metal and special roofs
- interior insulation (walls, floors, ceilings)